

Community Stuff

2025 Pet / Animal Licenses were due January 31. Current rabies vaccinations are required on all animals. Please bring a copy to your Housing Specialist for you file. Pet licenses available at the Municipal Building at 400 E. Military Ave. **Remember the Animal designated area is between the buildings smoking areas.** Call 402-727-2630 with Questions.

Germ Season

We are in full swing of the germ season and we want to remind everyone to be mindful of your vulnerable neighbors. Please stay home if you are not feeling well. It is recommended that if you cover all coughs and sneezes. If no hanky is available please sneeze into your elbow.

Be Kind to our Maintenance Staff

Please keep all hallways, community rooms and entrance areas clear of items. Anything left in these areas will be thrown away.

Please remember to bag all garbage going down the trash chute. No liquids or food not in bagged should not go down the chute as this is unsanitary. Glass and Kitty litter should never go down the chute. Please take these and broken down oversized boxes outside to put directly in the trash cans.

For Furniture to be hauled away, please prepay in the office before taking it out to the Trash area.

Allo Equipment marked "Stays in Unit" should be left in the unit when you move. Thank you.

Updates:

- Phone Numbers - Please remember to let the office know when you get a new phone number. We may need to contact you and our records need to be current.
- Mail - Wrong mail in your box should be returned to the post office via the mail slot.



Thank you to all that help make our Social Events a success. We cannot do it without everyone's help.

Special thanks to all that contributed to our potluck and those that stayed afterwards to clean up.

AgeLess
at Methodist Fremont Health

Heart Healthy Fitness
With
Kylie Fullner, DPT, PT

Wednesday, Feb. 12
Wellness Screening Blood Draw 7-8:30am
Breakfast Served 8:30-8:45am
Presentation 8:45-9:15am
MFH, 3rd floor Health Park Plaza

RSVP to Jill at jill.gossett@nmhs.org or 402-727-3439



CANDY

Find and circle all of the Candy treats that are hidden in the grid.
The remaining letters spell a secret message.



S J E L M S E S S I K Y E H S R E H S Y L Y
 B E E L L U M S O L S Y J E C L U L T Y B S
 E A N N S A G H L P O M T R W B E T O S R L
 E A F S R G H A A L U P A W B A A V H D O L
 N R I T E E U C K Y A C O A I P C S D U P O
 T E I E N N E M E O K B B K T X A P E D O R
 C E C R A L B L M E O U R N E S N O R K P E
 S J Y C T E B U R I B Z I U D S D R N L R I
 D A S T O B L J T B B M A E O Y Y D L I O S
 O W O R U W A B A T R E E B A S N N O M C T
 F B P B E C A G B E E S A L R D E O L E K O
 S R S C K L U F P U N R M R S N C M L I S O
 T E T L W M Z P E I B O F D S U K E I M S T
 E A R A A E E Z K R N E G I N O L L P I E S
 L K A R X P T P I D S R L O N M A P O L L E
 C E T K L O M N J W A L D B O G C E P K K B
 I R E B I U R O K I T K A T B B E Z S Y C U
 H S E A P E Y B A B Y R U T H U E R A W U J
 C G W R S P S I R C E E F F O C D R S A H U
 A N S S P E A R M I N T L E A V E S S Y C J
 L I F E S A V E R S L I C O R I C E P I P E

ALMOND JOY
 BABY RUTH
 BAZOOKA GUM
 BOTTLECAPS
 BUBBLE YUM
 BUTTERFINGERS
 CANDY NECKLACE
 CHICLETS
 CHUCKLES
 CLARK BAR
 COFFEE CRISP

CRACKER JACK
 DUBBLE BUBBLE
 GOOBERS
 GUMMI BEARS
 HERSHEY KISSES
 HUBBA BUBBA GUM
 JAW BREAKERS
 JUJUBES
 KIT KAT
 LEMON DROPS
 LICORICE PIPE

LIFESAVERS
 LOLLIPOPS
 MILK DUDS
 MILKY WAY
 MOUNDS
 NECCO WAFERS
 OH HENRY
 PEPPERMINT
 PATTY
 PEZ
 POP ROCKS
 PUMPKIN SEEDS

RED HOTS
 SEN-SEN
 SLO-POKES
 SMARTIES
 SOUR BALLS
 SPEARMINT
 LEAVES
 SWEETARTS
 TOOTSIE
 ROLLS
 TWIX
 TWIZZLERS

Call RSSC with answer to win! 402-727-4848 Ext 109

Fremont Housing Agency
 2510 N. Clarkson St.
 Fremont, NE 68025
 (402) 727-4848
 (402) 727-4751 - fax
 www.fremonthousing.org

Resident Support Services
 Stanton Tower 205
 (402) 727-4848 ext. 109

IMPORTANT NUMBERS

Central Navigation
 Centralized Intake
 402 721-4157

Fremont Transportation
 (402) 459-2845

Fremont Police Dept.
 (402) 727-2677
 Emergency - 911

Fremont Fire Dept.
 (402) 727-2688
 Emergency - 911

General Assistance
 (402) 727-2731

Health & Human Services
 (402) 595-1258

Salvation Army
 (402) 721-0930

Northeastern Nebraska Community Action Partnership-NENCAP
 (402) 385-6300

Eastern Nebraska Office on Aging-ENOA Senior Center
 (402) 721-7770
 (402) 727-2815

Uniquely Yours
 (402) 727-8977

Fremont Lock Shop
 (402) 317-1983

BOOK MOBILE - Keene Memorial Library
Friday February 7

Stanton Tower | 9:30 AM-10:30 AM
Gifford Tower | 10:30 AM-11:30 AM



Come celebrate Birthdays with Lilly from Essential Care.

Come and join the fun as we take a walk down memory lane with our residents who are celebrating each month.

This month, we will be getting together in The Stanton Community Room on Thursday, February 6 at 1:00 pm. You may get any of your Medicare or Medicaid questions answered as well.



Happy Valentines

Valentines Day Bingo Followed by Sweet Desserts
Friday February 14 at 2:00 to 4:00 pm
in the Stanton Community Room.

PEST-TROL SERVICE

Floors 6 through 9 | Stanton Tower | February 12
Floors 6 through 9 | Gifford Tower | February 26

Remember to report sightings *immediately* to the Office.

Trivia

Now twice a month! February 6 & 20 at 1:30pm
Stanton Community Room



Chili Cookoff

Saturday February 22 from 5-7:00 pm
 \$5.00 at the Stanton Community Room

Blood Pressure clinic & Heart Health information



By Angels Care Home Health
 Thursday February 27 at 1:00pm
 Stanton Community Room



HIGHLIGHT OF EVENTS



Fremont Housing Agency

Dwayne Bennett
Executive Director
Riley O'Neill
Housing Program Mgr.

RENT DUE

Rent is due on Saturday, February 1. UFLEX, Checks or Money Orders Only! NO CASH!!! Rent is due and payable on the first day (1st) of each month. Tenants who have failed to make full payment by 3:00 p.m. on the fifth (5th) day of the month, are considered delinquent and will be assessed a late fee. If the 5th falls on Saturday, the rent is due by 3 p.m. on the Housing Agency's work day prior to the 5th. If the 5th falls on Sunday, the rent is due at 9:00 a.m. on the Housing Agency's next work day.

Late payment charges will be applied as follows:

- \$30 will be assessed on the 6th of each month for payments made after the 5th of each month.
- An additional \$20 will be assessed on the 21st of each month for payments not made prior to 3:00 p.m. on the 20th of the month.



The Agency does not accept partial payments of rent.

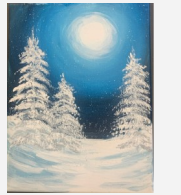
For after hour Maintenance emergencies only! contact:
Ed: 402 720-1264

“Let’s Talk...”
February 2025



Resident Art Show

Friday, February 28 from 6:30 to 8:30pm
 Stanton Community Room



Paintings completed in the 6 week art classes will be displayed for friends and family to see our masterpieces.

Come and enjoy some refreshments while seeing what has been accomplished in just six weeks..

Be kind, for everyone you meet is fighting a hard battle. Plato

- Kindness is the language which the deaf can hear and the blind can see Mark Twain
- You can accomplish by kindness what you cannot by force: Publilius Erus.
- Always be a little kinder than necessary: J.M. Barrie, the author of Peter Pan.

Rentwise Class



RentWise is a program to help renters obtain and keep rental housing and be successful renters through education.

The class is free to residents of low-income housing, and open to the public for the cost of \$5. A certificate will be awarded upon completion of all the classes.

The RentWise class is on March 13-14, 2024 (Thur & Friday) from 8:30 a.m. to noon each day in the Gifford Tower Community Room. Deadline to register is March 1st.

Be sure to take part in this free and informative opportunity. If you are interested in attending call: Tina @ 402-727-4848 ext. 102

FHA CLOSINGS

Monday, February - 17 Presidents day
Thursday February 27 — Office windows closed
Kitchen will be closed February 17 and 18.
No Meals served.






FAIR HOUSING: IT'S NOT AN OPTION. IT'S THE LAW.



February 2025




Sun	Mon	Tue	Wed	Thu	Fri	Sat
2	3 2-4-Art and Crafts at Stanton Tower	4 10-11-RSSC at Gifford Tower 1:00 Art Class	5 2:00- Resident Council and Social Club Meeting	6 1:00-Medicare / Birthday Party with Lilly Walker 1:30 Trivia	7 Keene Bookmobile 9:30 Stanton 10:30-Gifford 2-4 pm-Bingo at Stanton Tower	8 2-3 Coffee at Stanton Tower
9 Super Bowl Sunday 5:30 pm 	10 2-4-Art and Crafts at Stanton Tower	11 10-11-RSSC at Gifford Tower 1:00 Art Class	12 Pest-Trol Stanton Floors 6-9	13	14 2-4 pm-Birthday Bingo at Stanton 4:00 Valentine Social Cake & Strawberries At Stanton 	15 2-3 Coffee and Birthday Cake at Stanton
16	17 2-4-Art and Crafts at Stanton Tower Office Closed No meals served	18 1:00 Art Class Kitchen is closed No meals served	19	20 1:30-2:30-Trivia	21 2-4 pm-Bingo at Stanton Tower	22 5-7 Chili Feed at Stanton Community Room 
23	24 2-4-Art and Crafts at Stanton Tower	25 10-11-RSSC at Gifford Tower 1:00 Art Class	26 Pest-Trol Gifford Floors 6-9	27 1:30-Angels Care Blood Pressure Clinic	28 2-4 pm-Sandwich Bingo at Stanton Tower Art Show	



February 2025



Sun	Mon	Tue	Wed	Thu	Fri	Sat
Monthly menus are available at the Gifford & Stanton Tower offices. If you are interested in starting the Food Service Program, please feel free to contact Resident Support Services at 727-4848 ext. 109 or stop at the office during regular business hours. Please call the RSSC for any changes or cancellations.						
2 Spaghetti with Sauce Cheesy Toasted Bread Butterscotch Pudding	3 Macaroni and Cheese Bake Ham Slice Green Bean Mixed Fruit	4 Vegetable Beef Soup Corn Muffin Pears	5 Pulled Pork Sandwich Baked Beans Potato Salad Cookie	6 Soft Shell Taco Corn Salsa Lemon Bar	7 Spareribs With Sauerkraut Mashed Potatoes Spice Cake	8 Macaroni and Cheese Bake Ham Slice Green Bean Mixed Fruit
9 Vegetable Beef Soup & Crackers Dinner Roll Fruit	10 Tuna Salad Croissant Chips Pickle Ambrosia	11 Ham and Bean Soup Corn Bread Brownie	12 Smothered Pork Chop Mashed Sweet Potatoes Corn Angel Food With Cherries	13 Beef Stew Bread and Butter Apple Crisp	14 Salmon Loaf Scalloped Potatoes Corn Fruit	15 Tuna Salad Chips Pickle Ambrosia
16 Beef Stew Bread and Butter Apple Crisp	17 KITCHEN AND DINING ROOM CLOSED- NO MEALS	18 KITCHEN AND DINING ROOM CLOSED- NO MEALS	19 Meat Loaf Baked Potato Pea Salad Cherry Cobbler	20 Creamy Potato Soup 1/2 Cheese Salad Sandwich Fruit	21 Tuna Noodle Casserole Peas Peaches	22 Macaroni and Chicken Salad Bread Stick Jell-O Fruit Salad
23 Meat Loaf Baked Potato Pea Salad Cherry Cobbler	24 Ham and Egg Casserole Fruit Cup Cranberry Muffin	25 Shepherd's Pie Jell-O Salad Pumpkin Bars	26 Hamburger on a Bun Fries Baked Beans Mandarin Oranges	27 Ham Slice Scalloped Potatoes Corn Lettuce Salad Chocolate Cake	28 Hamburger Tater Tot Casserole Bread & Butter Chocolate Pudding	

Worst Winter in Nebraska History

In Nebraska, there are certain winters that grandparents relate to their grandkids about "the hard times". Of those, the [Long Winter of 1880-1881](#), the [Schoolchildren Blizzard of 1888](#), the [Armistice Day Blizzard of 1940](#), and the [Great Blizzard of 1975](#). However, one winter stands out, the winter of 1948-1949.

NOVEMBER 16-22, 1948 THE PRECURSOR

November 15, 1948, was a warm day across Nebraska with many locations hitting the 70s. By November 18, a ferocious blizzard began over central Nebraska, one that would drop up to 2' of snow.

Older residents compared the storm to the Children's Blizzard of 1888 in that relatively warm conditions lulled people outside. Motorists were driving, children were in schools, and others went to work before the storm hit. Once the wind and snow began, it fell for almost four straight days, trapping many people. The Weather Bureau described the storm as thus: *From the 17th to 20th one of the most severe early season snow storms of record occurred in the central Great Plains, resulting in millions of dollars damage and a loss of at least 9 lives. The storm was at its worst in western Kansas and Nebraska where a heavy snowfall of 4 to 20 inches, blown by gale force winds into drifts up to 20 feet deep, blocked many railroads and highways, stranded motorists, disrupted communications, isolated many communities, and caused much loss of livestock.*

DECEMBER 1948

December started quite warm for Nebraska, Omaha hit a high of 63 on December 4th. That warm spell ended abruptly. Snow overspread Nebraska on December 23 and continued into Christmas Eve. The snow totals ranged from around 8" to drift 16". Surprisingly, despite the heavy snow, there were no significant issues for travel or Christmas festivities.

A few days after Christmas, an area of freezing drizzle developed over Nebraska, they were causing travel issues and power outages due to the ice.

JANUARY 2-5, 1949: THE GREAT BLIZZARD

It was described by some who witnessed it as a gray cloud as it moved into the Nebraska panhandle as early as the lunch hour on the 2nd, within minutes everything went from clear to snow cover.

The Weather Bureau summarized the storm thus: *Worst experienced in [Nebraska], with reference to force of wind, amount of snow and drifting, and the duration of severe conditions. Even worse than the storm itself were the conditions that followed. Winds redrifted snow over roads many times. Ice mixed with snow made use of ordinary equipment for snow removal limited. Private, county, State, and federal agencies worked continuously for many days. Losses to railroads immense. Livestock losses estimated at 4 percent; this may require division as reports come in. Relief operations, and opening and reopening of roads requiring expenditures running into the millions. Several lives lost.*

So, what made this winter so unique? The wind and cold! This winter was exceptionally windy with an average wind speed of between 10-20 mph with gusts over 30 mph and the continued cold did not allow snow to melt. This, combined with the limited technology of 1949, was what made this winter so nasty.

Hopefully, if Nebraska ever has to deal with a winter like that, we would be able to handle it today.

INFORMATION


YOU



NEED TO

KNOW

Phone Numbers Community Agencies



Adult Protective Services/Child Protective Services 800-652-1999
Commodities—NENCAP 402-385-6300
DHHS Economic Assistance Phone Number 402-595-1258
DHHS Medicaid 402-595-1178
Dodge County General Assistance 402-727-2731
Dodge County Veterans Association 402-727-2719
Eastern Office On Aging 402-721-7770
Fremont Friendship Center 402-727-2815
Home and Community Based Service (HCBS) Waiver 877-667-6266
Keene Memorial Library 402-727-2694
Meals On Wheels 402-721-8262
LifeHouse 402-721-3125
Salvation Army 402-721-0930
Uniquely Yours Stability Support 402-727-8977

Reminders

Please provide the office with your 2025 Social Security Award Letters
Be mindful of the calendar of events when you are using the Stanton Tower Community Room as a walk way.

Help yourself to clothing/coat in the Gifford Community Room
Donations are from Uniquely Yours Stability Support.

Disclaimer of Liability: Every effort is made to provide accurate and complete information in the Fremont Housing Agency newsletters. However, the FHA cannot guarantee that there will be no errors. The FHA makes no claims, promises, or guarantees about the accuracy, adequacy, validity, reliability, availability, or completeness of any information and expressly disclaims liability for errors and omissions in the contents of this newsletter. FHA does not assume any liability for any direct, indirect or any other loss or damage of any kind incurred as a result of the use of the newsletter or any reliance on any information provided in the newsletter. Your use of the newsletter and your reliance on any information in the newsletter is solely at your own risk.

